

Performance on SSA Headline Indicators

Baltimore City

Showing performance as of June 2023 (SFY)

Version: 8/23/23 | CJAMS extract: 7/15/23

Data Dictionary: For more information about each indicator refer to the Data Dictionary available at

<https://docs.google.com/document/d/1aWUspHzMqVKD5wWJ178qTbcFAACZ6ZKIZ-CaO5XtY9CM/edit>.

The Dictionary describes in detail how each indicator is defined, the children it includes, and other important notes.

Small counties & rare outcomes: In small counties or for indicators in which the outcome is rare, a change in one or two children can create a large change in performance, and a large percent change, from one period to the next. In these cases, such a large change may not be cause for alarm. See the data table (last page) for the actual number of children that were included in the calculation. If performance is not shown for a given period or indicator, it means there were no children eligible for the indicator and therefore no performance to report.

Questions & feedback: For questions about these dashboards or for suggestions to improve them, contact Shana Proctor at shana.proctor1@maryland.gov or 443-934-4173.

Dashboard Schedule: This dashboard is updated every quarter to provide the most recent data available. For each update, performance is shown for a new "12-month cohort" of children. The cohorts used are as follows:

- 1 - **CFSR** - April to March of the following year
(e.g., Apr 2021 - Mar 2022)
- 2 - **SFY** - July to June of the following year
(e.g., Jul 2021 - Jun 2022)
- 3 - **FFY** - Oct to Sep of the following year
(e.g., Oct 2021 - Sep 2022)
- 4 - **CY** - Jan to Dec of the same year
(e.g., Jan 2022 - Dec 2022)

Table of Contents

Headline Indicators (most recent period, trends in performance, % change over time)

- p. 03 Safety
- p. 04 Permanency
- p. 05 Well-Being

Headline Indicators (trends in numerator and denominator)

- p. 06 Safety
- p. 07 Permanency
- p. 08 Well-Being

Other

- p. 09 Data table

Storylines

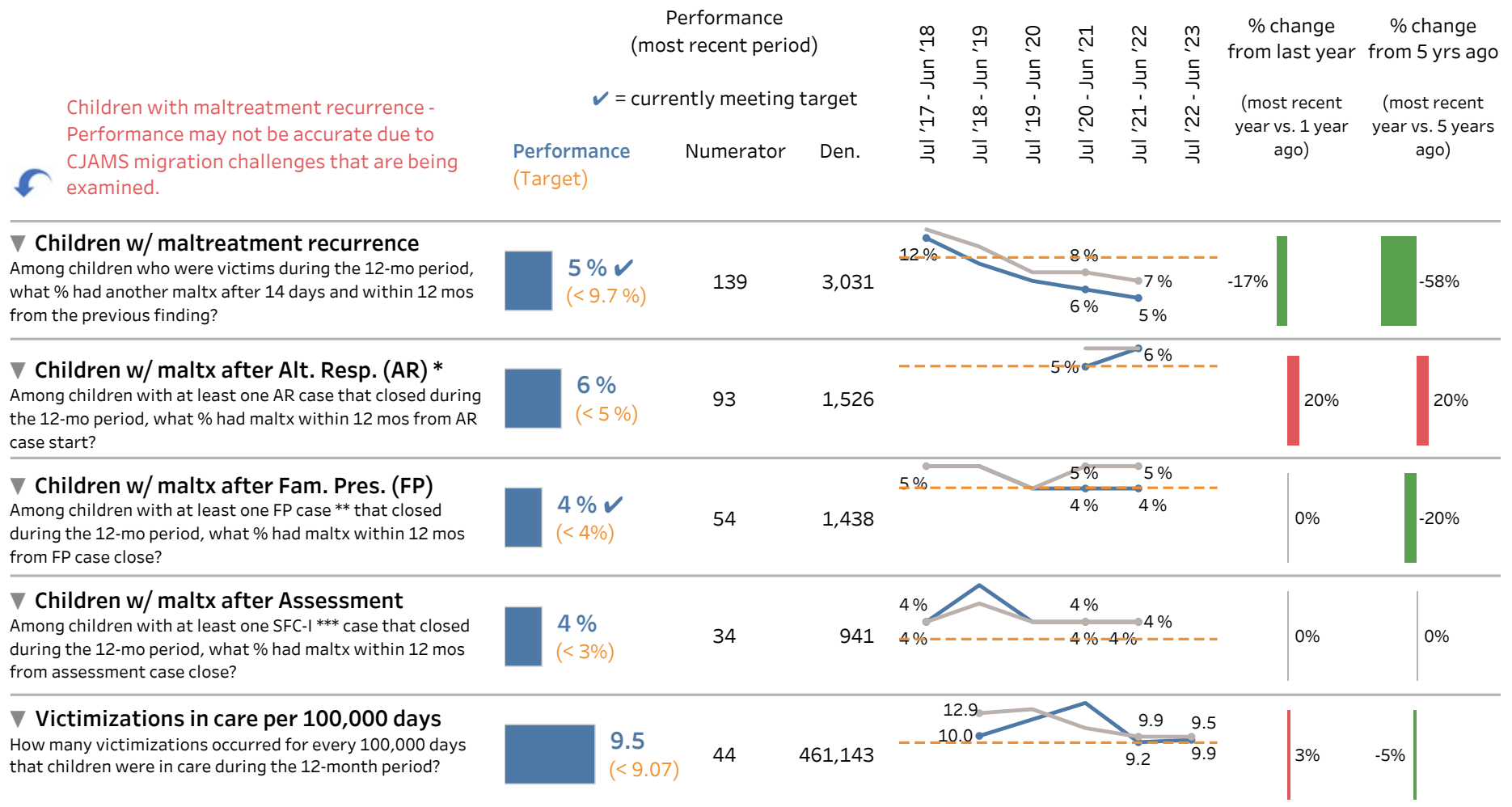
- p. 10 Entries by race, ethnicity, age, and circumstance of removal
- p. 12 Permanency in 12 mos by race, ethnicity, age, and circumstance of removal
- p. 18 Placement stability by race, ethnicity, and age

Child Safety Headline Indicators | Baltimore City (SFY)

Maryland Dept. of
Human Services



Children, youth, families, and adults are safe and free from maltreatment



All indicators exclude children 18 and older. Victimization = a report that was Indicated or Unsub.

* AR data are expunged after three years, so the AR data contains only the most recent two years.

** Consolidated or IFPS. *** SFC-I = Services to Families w/children.

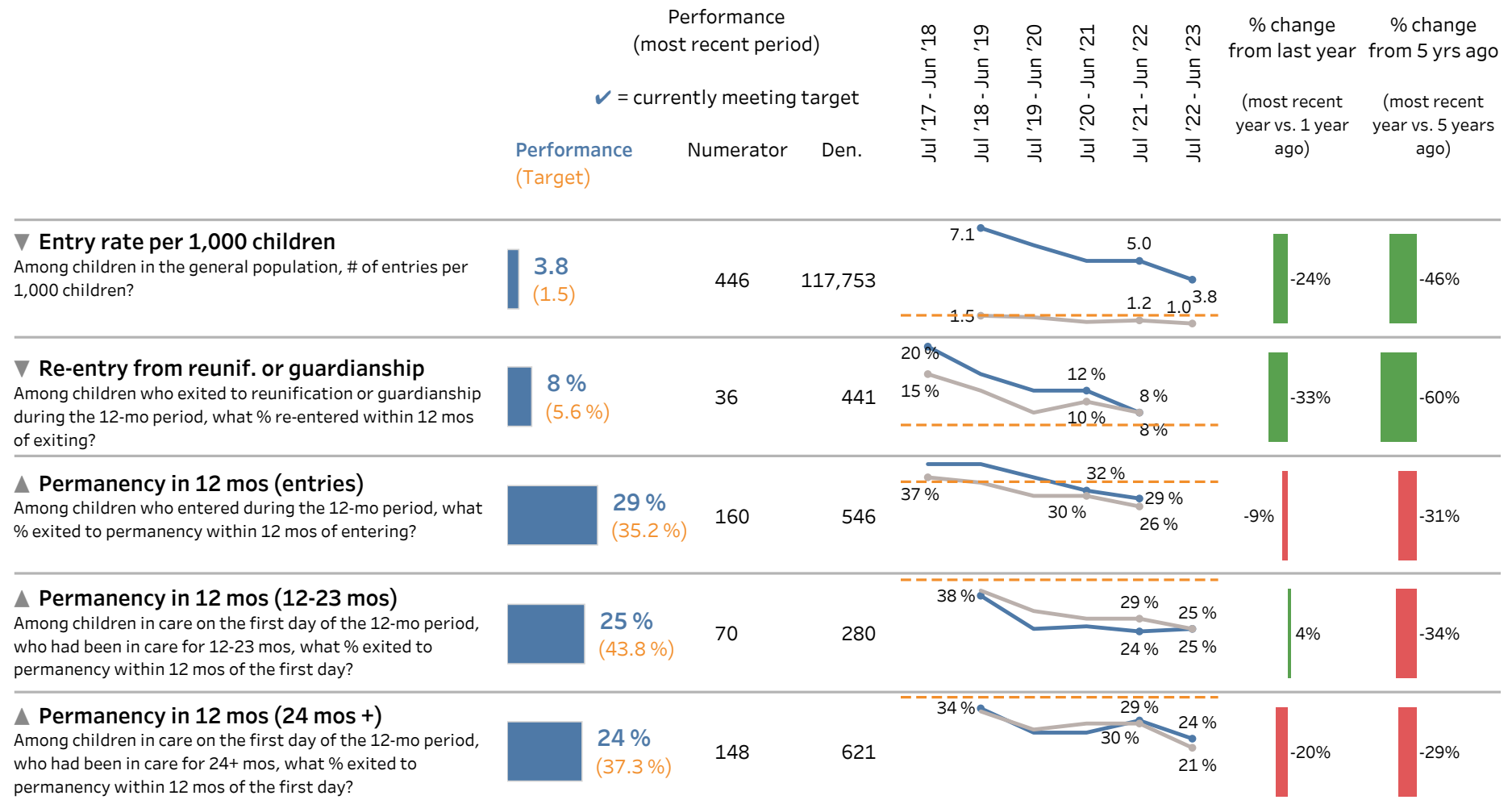
▲ A higher value is more desirable. ▼ A lower value is more desirable.

Permanency Headline Indicators | Baltimore City (SFY)

Maryland Dept. of
Human Services



Children, youth, & adults live in safe, supportive, & stable families where they can grow & thrive



All indicators exclude children 18 and older.

Permanency = exit to reunification, guardianship, or adoption.

▲ A higher value is more desirable. ▼ A lower value is more desirable.

● MD ● Target
■ B. City

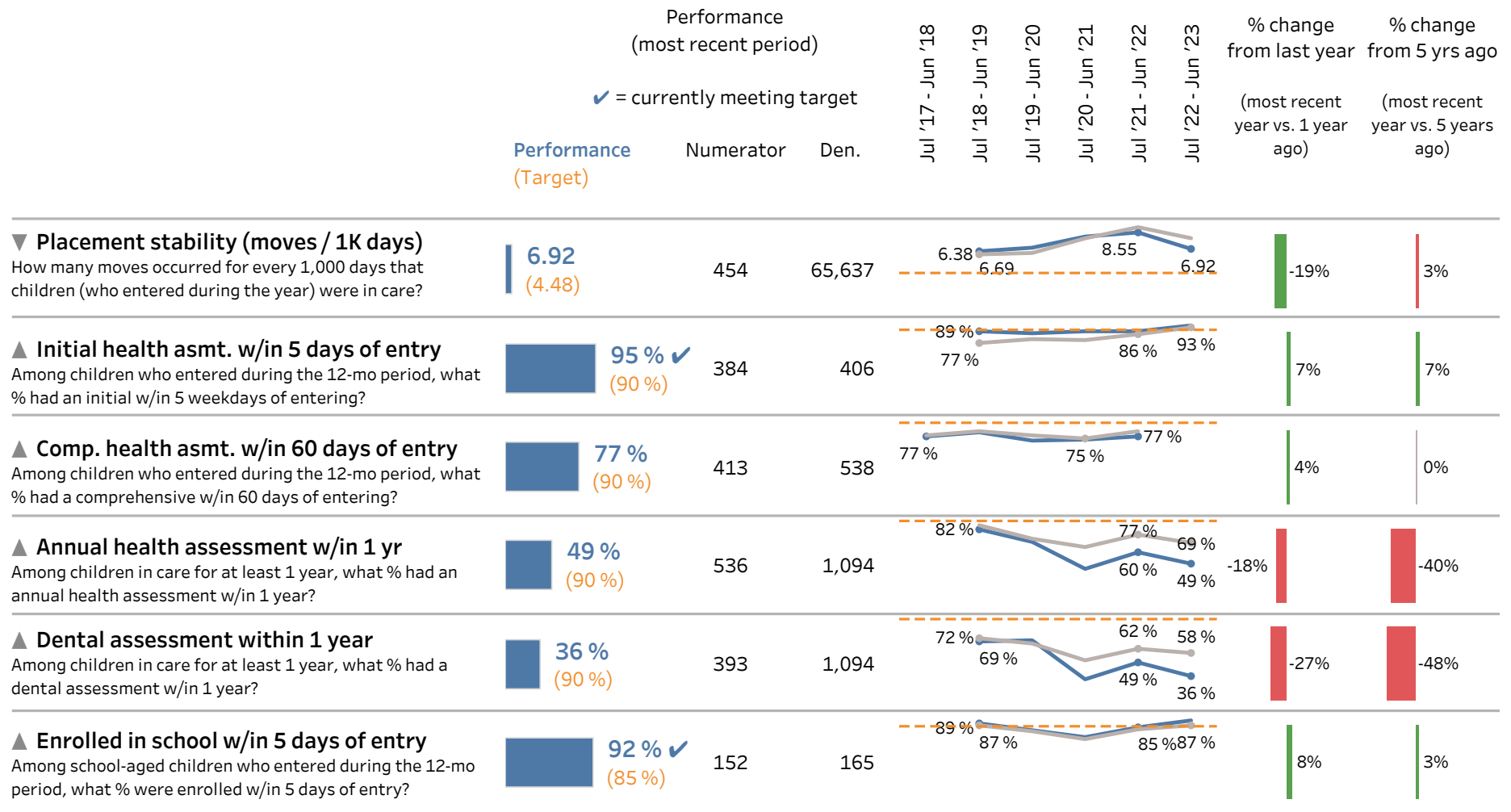
■ Performance is going in wrong direction

Well-Being Headline Indicators | Baltimore City (SFY)

Maryland Dept. of
Human Services



Children, youth, families, & adults are healthy, resilient, and have stable and lasting connections



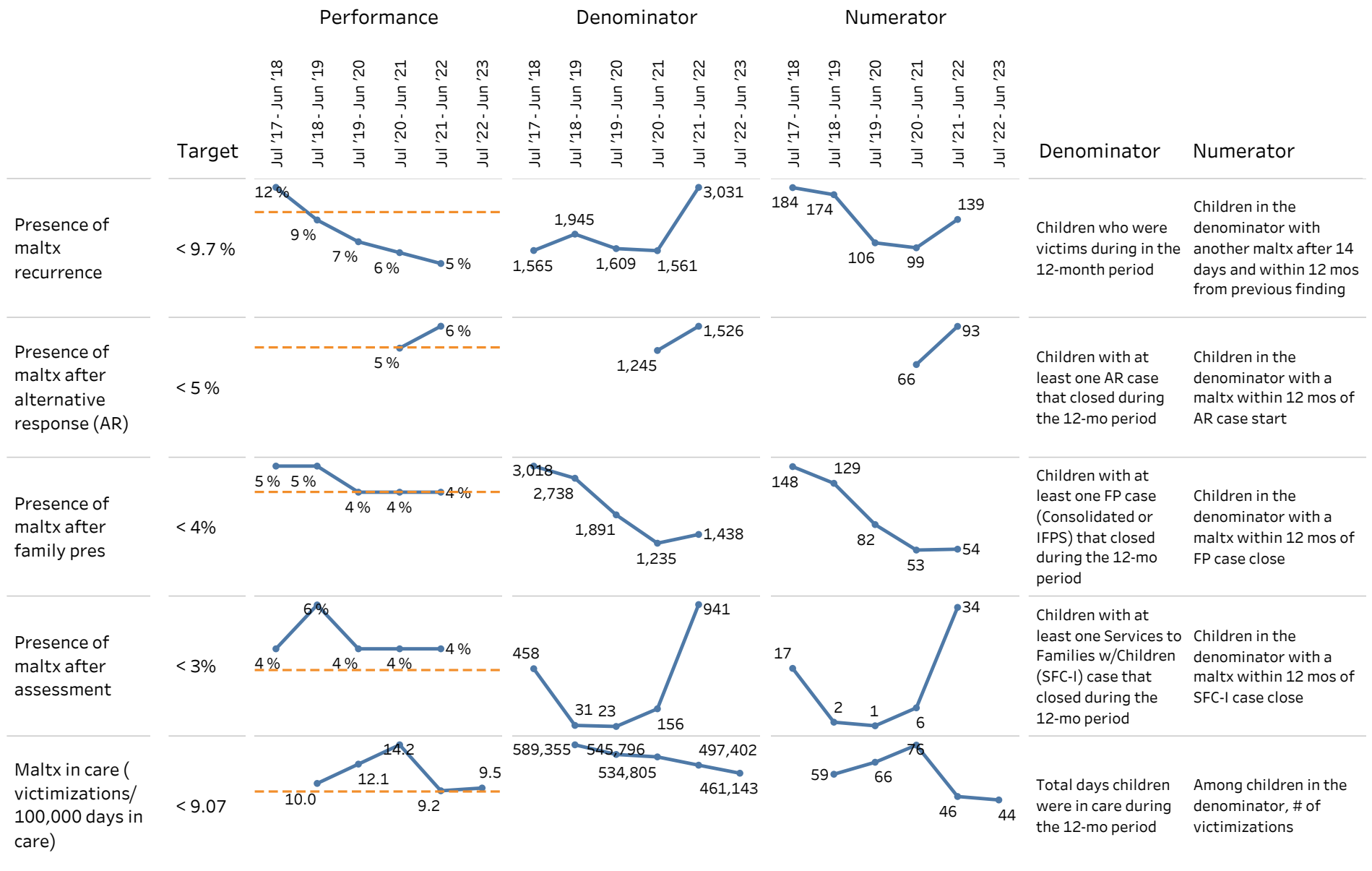
All indicators exclude children 18 and older.

▲ A higher value is more desirable. ▼ A lower value is more desirable.

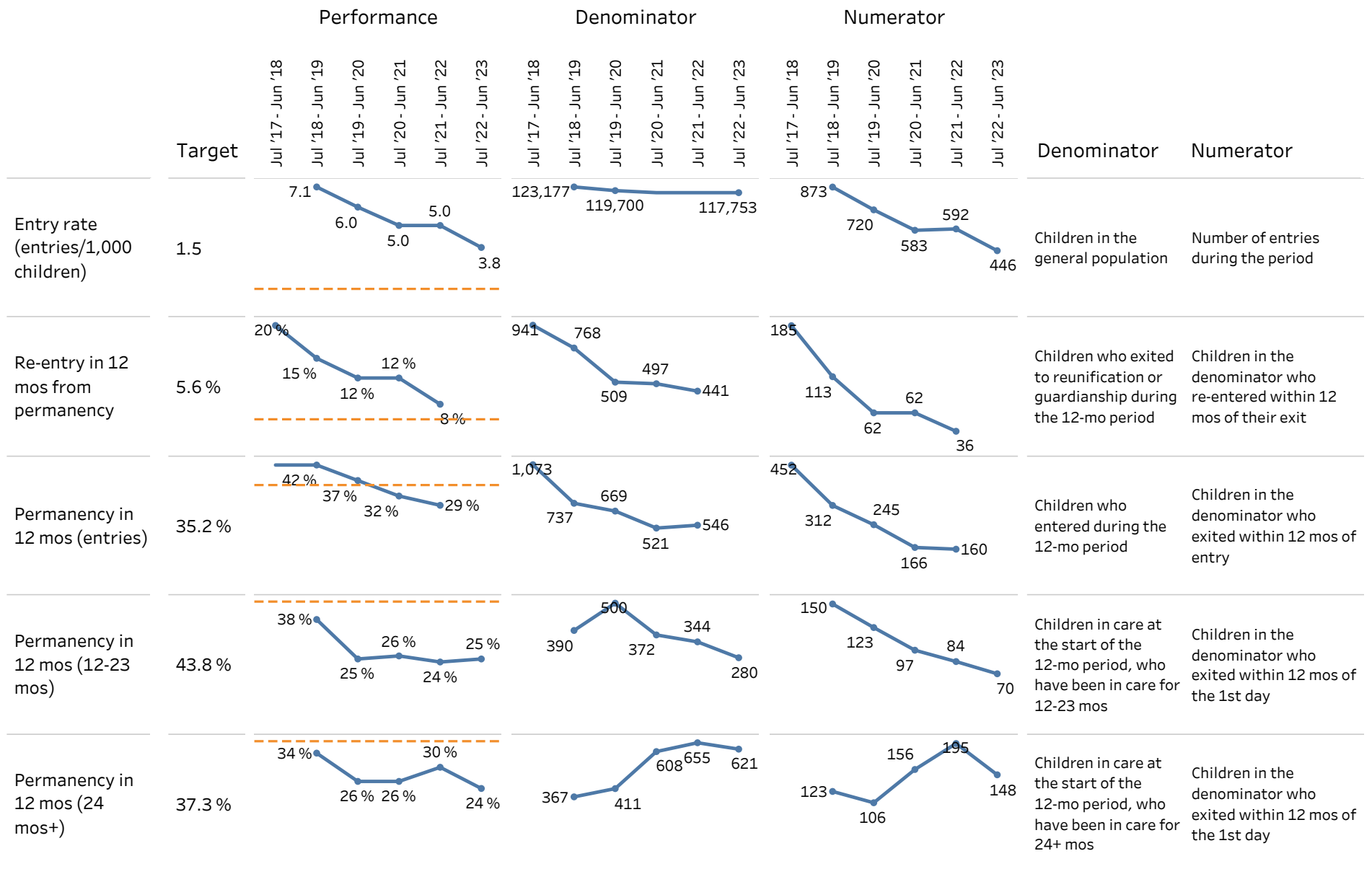
● MD ● Target
■ B. City

■ Performance is going in wrong direction

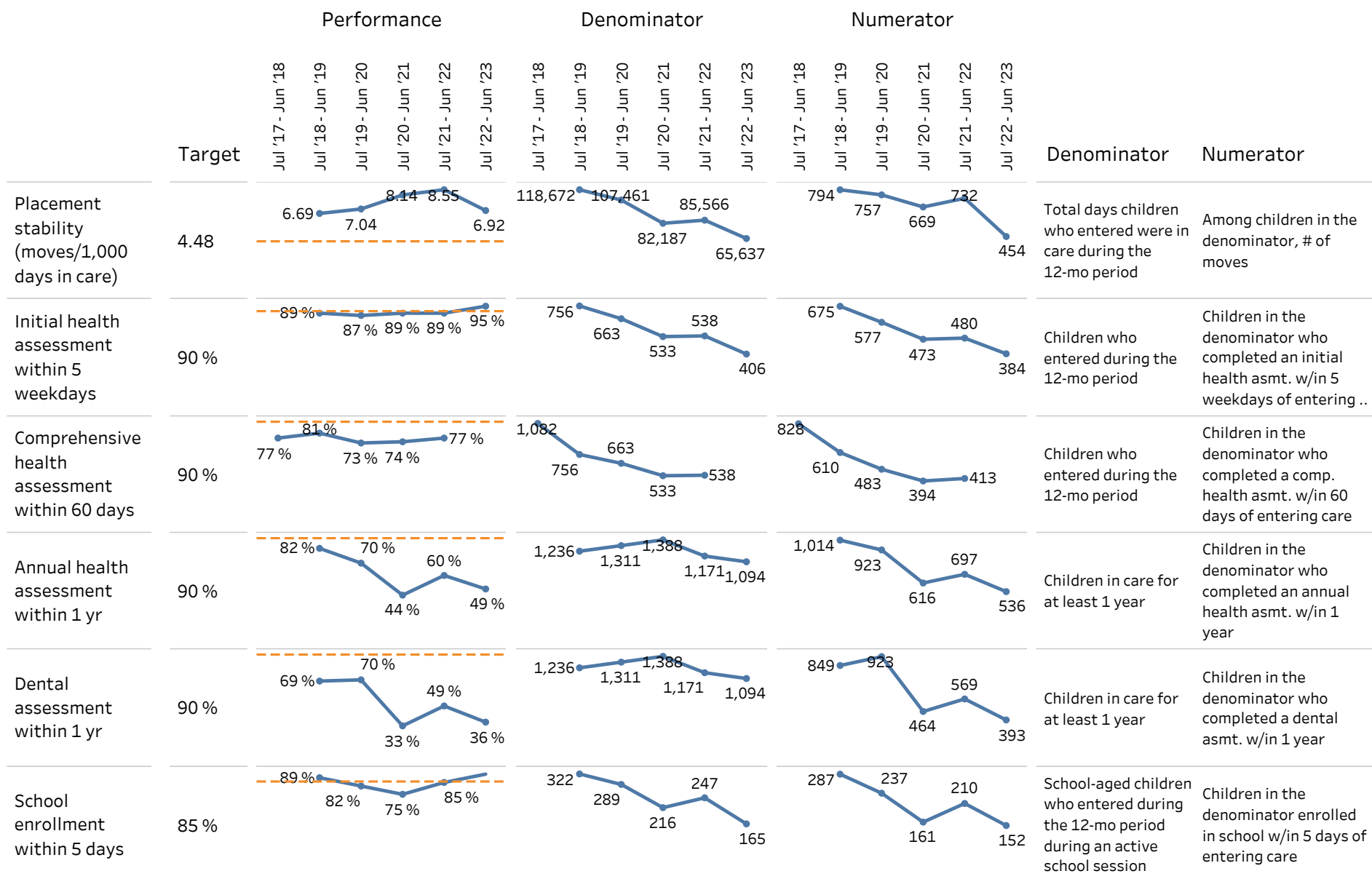
Safety | Performance, Numerator, & Denominator | Baltimore City



Permanency | Performance, Numerator, & Denominator | Baltimore City



Well-Being | Performance, Numerator, & Denominator | Baltimore City



Data Table | Numerators, Denominators, & Performance | Baltimore City (SFY)

			Jul '17 - Jun '18	Jul '18 - Jun '19	Jul '19 - Jun '20	Jul '20 - Jun '21	Jul '21 - Jun '22	Jul '22 - Jun '23
Safety	% with another maltx after 14 days and within 12 mos from previous finding (maltx recurrence)	Numerator	184	174	106	99	139	
		Denominator	1,565	1,945	1,609	1,561	3,031	
		Performance	12.0	9.0	7.0	6.0	5.0	
	% with maltx within 12 mos from alternative response (AR) case start	Numerator				66	93	
		Denominator				1,245	1,526	
		Performance				5.0	6.0	
	% with maltx within 12 mos from family preservation (FP) case close	Numerator	148	129	82	53	54	
		Denominator	3,018	2,738	1,891	1,235	1,438	
		Performance	5.0	5.0	4.0	4.0	4.0	
	% with maltx (and were not served in family pres) within 12 mos from assessment case close	Numerator	17	2	1	6	34	
		Denominator	458	31	23	156	941	
		Performance	4.0	6.0	4.0	4.0	4.0	
	# of victimizations per 100,000 days in care (maltx in care)	Numerator		59	66	76	46	44
		Denominator		589,355	545,796	534,805	497,402	461,143
		Performance		10.0	12.1	14.2	9.2	9.5
Permanency	# entering per 1,000 children (entry rate)	Numerator		873	720	583	592	446
		Denominator		123,177	119,700	117,753	117,753	117,753
		Performance		7.1	6.0	5.0	5.0	3.8
	% re-entering within 12 mos from permanency	Numerator	185	113	62	62	36	
		Denominator	941	768	509	497	441	
		Performance	20.0	15.0	12.0	12.0	8.0	
	% exiting to permanency within 12 mos (entries)	Numerator	452	312	245	166	160	
		Denominator	1,073	737	669	521	546	
		Performance	42.0	42.0	37.0	32.0	29.0	
	% exiting to permanency within 12 mos (12-23 mos)	Numerator		150	123	97	84	70
		Denominator		390	500	372	344	280
		Performance		38.0	25.0	26.0	24.0	25.0
	% exiting to permanency within 12 mos (24 mos+)	Numerator		123	106	156	195	148
		Denominator		367	411	608	655	621
		Performance		34.0	26.0	26.0	30.0	24.0
Well-being	# of moves per 1,000 days in care (placement stability)	Numerator		794	757	669	732	454
		Denominator		118,672	107,461	82,187	85,566	65,637
		Performance		6.7	7.0	8.1	8.6	6.9
	% with an initial health assessment within 5 weekdays of entering care	Numerator		675	577	473	480	384
		Denominator		756	663	533	538	406
		Performance		89.0	87.0	89.0	89.0	95.0
	% with a comprehensive health assessment within 60 days of entering care	Numerator	828	610	483	394	413	
		Denominator	1,082	756	663	533	538	
		Performance	77.0	81.0	73.0	74.0	77.0	
	% with an annual health assessment within 1 yr	Numerator		1,014	923	616	697	536
		Denominator		1,236	1,311	1,388	1,171	1,094
		Performance		82.0	70.0	44.0	60.0	49.0
	% with a dental assessment within 1 yr	Numerator		849	923	464	569	393
		Denominator		1,236	1,311	1,388	1,171	1,094
		Performance		69.0	70.0	33.0	49.0	36.0
	% enrolled in school within 5 days of entering care	Numerator		287	237	161	210	152
		Denominator		322	289	216	247	165
		Performance		89.0	82.0	75.0	85.0	92.0

Entries into care | Baltimore City (Jul '22 - Jun '23)

Racial disproportionality and disparity for children entering foster care

	Child population		Entries into care		Disproportionality *		Disparity (vs. white) **	
	#	%	#	%	Calculation	Rate	Calculation	Rate
AI or AN	220	0%	0	0%	(0 % / 0 %)	0.0	(0.0 / 0.7)	0.0
Asian	2,030	2%	0	0%	(0 % / 2 %)	0.0	(0.0 / 0.7)	0.0
Black or AA	85,790	68%	342	77%	(77 % / 68 %)	1.1	(1.1 / 0.7)	1.6
Hispanic	11,435	9%	26	6%	(6 % / 9 %)	0.6	(0.6 / 0.7)	0.9
NH or PI	80	0%	0	0%	(0 % / 0 %)	0.0	(0.0 / 0.7)	0.0
White	21,435	17%	53	12%	(12 % / 17 %)	0.7	(0.7 / 0.7)	1.0
Two or More	4,840	4%	22	5%	(5 % / 4 %)	1.3	(1.3 / 0.7)	1.8
Unable to det.			3	1%				
Total	125,830	100%	446	100%				

* **Disproportionality:** The under or over representation of a racial or ethnic group compared to its % in the population: > 1 = overrepresentation, < 1 = underrepresentation

** **Disparity:** The unequal outcomes of one racial or ethnic group compared to the outcomes for another (i.e., a reference group). Compared to white children, this group is ...
 > 1 = X.X times more likely to enter care < 1 = equally likely to enter care < 1 = X.X times less likely to enter care

Entry rate per 1,000 children, by age

Age	Child pop.	Entries	Baltimore City	Maryland
< 1	7,426	115	15.5	3.9
1 - 4	28,091	95	3.4	1.0
5 - 10	39,187	93	2.4	0.7
11 - 13	19,206	62	3.2	0.8
14 - 17	23,843	81	3.4	1.0
Total	117,753	446	3.8	1.0

Age makeup of children entering, by age

Age	Entries	Baltimore City	Maryland
< 1	115	26%	20%
1 - 4	95	21%	21%
5 - 10	93	21%	22%
11 - 13	62	14%	14%
14 - 17	81	18%	23%
Total	446	100%	100%

Entry rate = # of entries / child population * 1,000

Child population data by **race** is from a special tabulation of the 2015-2019 American Community Survey (ACS) 5-year estimate.

Child population data by **age** is from the U.S. Census. As a result, the total child population shown may differ between the two sources.

Entries into care | Baltimore City (Jul '22 - Jun '23)

Children entering care, by circumstance of removal

"Other" includes death of parent and incarceration.

Circumstance	Entries	# with	Baltimore City	Maryland
Neglect	446	226	51 %	55 %
Caregiver drug abuse	446	131	29 %	30 %
Physical abuse	446	113	25 %	17 %
Abandonment	446	75	17 %	17 %
Inability to cope	446	52	12 %	12 %
Child behavior	446	50	11 %	15 %
Inadequate housing	446	39	9 %	12 %
Caregiver alcohol abuse	446	23	5 %	8 %
Sexual abuse	446	20	4 %	4 %
Other	446	19	4 %	9 %
Child drug abuse	446	7	2 %	2 %
Child disability	446	8	2 %	5 %
Child alcohol abuse	446	3	1 %	1 %
Relinquishment	446	1	0 %	0 %

↓ For each circumstance, the age group with the highest % is highlighted in yellow

Number of children entering care, by circumstance and age

Circumstance	Total	< 1	1 - 4	5 - 10	11 - 13	14 - 17
Neglect	226	51	64	50	27	34
Caregiver Drug Abuse	131	65	26	21	9	10
Physical Abuse	113	16	25	33	17	22
Abandonment	75	11	15	10	12	27
Inability to Cope	52	21	11	14	3	3
Child Behavior	50	0	0	4	16	30
Inadequate Housing	39	13	13	9	3	1
Other Reason	19	3	7	3	3	3
Sexual Abuse	20	1	0	8	4	7
Caregiver Alcohol Ab..	23	2	7	5	4	5
Child Drug Abuse	7	4	1	0	0	2
Child Disability	8	0	1	1	2	4
Relinquishment	1	1	0	0	0	0
Child Alcohol Abuse	3	1	0	0	0	2

Percentage of children entering care, by circumstance and age

Circumstance	< 1	1 - 4	5 - 10	11 - 13	14 - 17
Neglect	23%	28%	22%	12%	15%
Caregiver Drug Abuse	50%	20%	16%	7%	8%
Physical Abuse	14%	22%	29%	15%	19%
Abandonment	15%	20%	13%	16%	36%
Inability to Cope	40%	21%	27%	6%	6%
Child Behavior	0%	0%	8%	32%	60%
Inadequate Housing	33%	33%	23%	8%	3%
Other Reason	16%	37%	16%	16%	16%
Sexual Abuse	5%	0%	40%	20%	35%
Caregiver Alcohol Abu..	9%	30%	22%	17%	22%
Child Drug Abuse	57%	14%	0%	0%	29%
Child Disability	0%	13%	13%	25%	50%
Relinquishment	100%	0%	0%	0%	0%
Child Alcohol Abuse	33%	0%	0%	0%	67%

Permanency in 12 mos (entries) | Baltimore City (Jul '21 - Jun '22)

Among children who entered during the 12-mo period, what percent exited to permanency within 12 mos of entering?

Children exiting to perm in 12 months, by race & ethnicity

Race	Entries	Exits to perm in 12	Baltimore City	Maryland
AI or AN	0	0		
Asian	0	0		27 %
Black or AA	426	131	31 %	28 %
Hispanic	34	12	35 %	31 %
NH or PI	0	0		
White	62	16	26 %	25 %
Two or More	24	1	4 %	14 %
Unable to det.	0	0		31 %
Total	546	160	29 %	26 %

Racial makeup of children exiting to perm in 12 months

Race	Exits to perm in 12	Baltimore City	Maryland
AI or AN	0	0%	0%
Asian	0	0%	1%
Black or AA	131	82%	56%
Hispanic	12	8%	9%
NH or PI	0	0%	0%
White	16	10%	26%
Two or More	1	1%	4%
Unable to det.	0	0%	4%
Total	160	100%	100%

Children exiting to perm in 12 months, by age at entry

Age	Entries	Exits to perm in 12	Baltimore City	Maryland
< 1	120	21	18 %	18 %
1 - 4	102	35	34 %	25 %
5 - 10	127	38	30 %	33 %
11 - 13	76	31	41 %	35 %
14 - 17	121	35	29 %	23 %
Total	546	160	29 %	26 %

Age makeup of children exiting to perm in 12 months

Age	Exits to perm in 12	Baltimore City	Maryland
< 1	21	13%	14%
1 - 4	35	22%	18%
5 - 10	38	24%	28%
11 - 13	31	19%	19%
14 - 17	35	22%	20%
Total	160	100%	100%

Permanency in 12 mos (entries) | Baltimore City (Jul '21 - Jun '22)

Children exiting to perm in 12 months, by circumstance of removal

"Other" includes death of parent and incarceration.

Circumstance	Entries	Exits to perm in 12	Baltimore City	Maryland
Child alcohol abuse	1	1	100 %	25 %
Child behavior	51	21	41 %	28 %
Physical abuse	119	47	39 %	41 %
Caregiver alcohol abuse	20	7	35 %	38 %
Inadequate housing	71	20	28 %	23 %
Neglect	241	62	26 %	26 %
Abandonment	54	14	26 %	17 %
Child disability	8	2	25 %	26 %
Caregiver drug abuse	115	23	20 %	16 %
Sexual abuse	17	3	18 %	25 %
Other	21	3	14 %	21 %
Child drug abuse	7	1	14 %	5 %
Inability to cope	53	6	11 %	21 %
Relinquishment	0	0		40 %

Performance by circumstance and age

This information is not currently available for this indicator.

Permanency in 12 mos (12-23 mos) | Baltimore City (Jul '22 - Jun '23)

Among children in care on the first day of the 12-mo period, who had been in care for 12-23 mos, what percent exited to permanency within 12 mos of the first day (FD)?

Children exiting to perm in 12 months, by race & ethnicity

Race	In care on FD	Exits to perm in 12	Baltimore City	Maryland
AI or AN	0	0		
Asian	0	0		
Black or AA	220	57	<div><div></div>26 %</div>	<div><div></div>24 %</div>
Hispanic	17	2	<div><div></div>12 %</div>	<div><div></div>23 %</div>
NH or PI	0	0		
White	35	10	<div><div></div>29 %</div>	<div><div></div>29 %</div>
Two or More	8	1	<div><div></div>13 %</div>	<div><div></div>27 %</div>
Unable to det.	0	0		<div><div></div>14 %</div>
Total	280	70	<div><div></div>25 %</div>	<div><div></div>25 %</div>

Racial makeup of children exiting to perm in 12 months

Race	Exits to perm in 12	Baltimore City	Maryland
AI or AN	0	<div><div></div>0%</div>	<div><div></div>0%</div>
Asian	0	<div><div></div>0%</div>	<div><div></div>0%</div>
Black or AA	57	<div><div></div>81%</div>	<div><div></div>49%</div>
Hispanic	2	<div><div></div>3%</div>	<div><div></div>8%</div>
NH or PI	0	<div><div></div>0%</div>	<div><div></div>0%</div>
White	10	<div><div></div>14%</div>	<div><div></div>34%</div>
Two or More	1	<div><div></div>1%</div>	<div><div></div>7%</div>
Unable to det.	0	<div><div></div>0%</div>	<div><div></div>2%</div>
Total	70	<div><div></div>100%</div>	<div><div></div>100%</div>

Children exiting to perm in 12 months, by age on first day

Age	In care on FD	Exits to perm in 12	Baltimore City	Maryland
1 - 4	112	30	<div><div></div>27 %</div>	<div><div></div>29 %</div>
5 - 10	66	22	<div><div></div>33 %</div>	<div><div></div>26 %</div>
11 - 13	32	11	<div><div></div>34 %</div>	<div><div></div>32 %</div>
14 - 17	70	7	<div><div></div>10 %</div>	<div><div></div>18 %</div>
Total	280	70	<div><div></div>25 %</div>	<div><div></div>25 %</div>

Age makeup of children exiting to perm in 12 months

Age	Exits to perm in 12	Baltimore City	Maryland
1 - 4	30	<div><div></div>43%</div>	<div><div></div>43%</div>
5 - 10	22	<div><div></div>31%</div>	<div><div></div>24%</div>
11 - 13	11	<div><div></div>16%</div>	<div><div></div>15%</div>
14 - 17	7	<div><div></div>10%</div>	<div><div></div>18%</div>
Total	70	<div><div></div>100%</div>	<div><div></div>100%</div>

Permanency in 12 mos (12-23 mos) | Baltimore City (Jul '22 - Jun '23)

Children exiting to perm in 12 months, by circumstance of removal

"Other" includes death of parent and incarceration.

Circumstance	In care on 1st day	Exits to perm in 12	Baltimore City	Maryland
Physical abuse	49	17	35 %	25 %
Abandonment	18	6	33 %	26 %
Neglect	150	44	29 %	28 %
Other	15	4	27 %	37 %
Child drug abuse	11	3	27 %	27 %
Sexual abuse	16	4	25 %	19 %
Child disability	8	2	25 %	26 %
Caregiver drug abuse	76	19	25 %	34 %
Caregiver alcohol abuse	5	1	20 %	40 %
Inadequate housing	34	6	18 %	26 %
Inability to cope	30	5	17 %	20 %
Child behavior	23	3	13 %	15 %
Relinquishment	0	0		100 %
Child alcohol abuse	0	0		67 %

Performance by circumstance and age

This information is not currently available for this indicator.

Permanency in 12 mos (24 mos+) | Baltimore City (Jul '22 - Jun '23)

Among children in care on the first day of the 12-mo period, who had been in care for 24 mos or more, what percent exited to permanency within 12 mos of the first day (FD)?

Children exiting to perm in 12 months, by race & ethnicity

Race	In care on FD	Exits to perm in 12	Baltimore City	Maryland
AI or AN	1	0	0 %	0 %
Asian	0	0	0 %	0 %
Black or AA	465	116	25 %	21 %
Hispanic	29	3	10 %	17 %
NH or PI	0	0	0 %	0 %
White	104	24	23 %	23 %
Two or More	20	5	25 %	22 %
Unable to det.	2	0	0 %	10 %
Total	621	148	24 %	21 %

Racial makeup of children exiting to perm in 12 months

Race	Exits to perm in 12	Baltimore City	Maryland
AI or AN	0	0%	0%
Asian	0	0%	0%
Black or AA	116	78%	57%
Hispanic	3	2%	8%
NH or PI	0	0%	0%
White	24	16%	28%
Two or More	5	3%	7%
Unable to det.	0	0%	0%
Total	148	100%	100%

Children exiting to permanency, by age on first day

Age	In care on FD	Exits to perm in 12	Baltimore City	Maryland
< 1	0	0	0 %	0 %
1 - 4	173	57	33 %	31 %
5 - 10	212	55	26 %	23 %
11 - 13	79	17	22 %	19 %
14 - 17	157	19	12 %	11 %
Total	621	148	24 %	21 %

Age makeup of children exiting to perm in 12 months

Age	Exits to perm in 12	Baltimore City	Maryland
< 1	0	0%	0%
1 - 4	57	39%	36%
5 - 10	55	37%	34%
11 - 13	17	11%	12%
14 - 17	19	13%	17%
Total	148	100%	100%

Permanency in 12 mos (24 mos+) | Baltimore City (Jul '22 - Jun '23)

Children exiting to perm in 12 months, by circumstance of removal

"Other" includes death of parent and incarceration.

Circumstance	In care on 1st day	Exits to perm in 12	Baltimore City	Maryland
Child alcohol abuse	5	3	60 %	43 %
Caregiver alcohol abuse	29	10	34 %	31 %
Relinquishment	61	20	33 %	27 %
Child disability	25	8	32 %	13 %
Caregiver drug abuse	119	30	25 %	26 %
Neglect	445	109	24 %	21 %
Physical abuse	104	23	22 %	18 %
Child drug abuse	54	12	22 %	19 %
Inability to cope	90	17	19 %	17 %
Inadequate housing	64	11	17 %	15 %
Child behavior	40	5	13 %	9 %
Abandonment	51	5	10 %	17 %
Other	28	2	7 %	26 %
Sexual abuse	20	1	5 %	9 %

Performance by circumstance and age

This information is not currently available for this indicator.

Placement stability (moves/1,000 days in care) | Baltimore City (Jul '22 - Jun '23)

How many moves occurred for every 1,000 days that children (who entered during the year) were in care?

Placement moves per 1,000 days in care, by race & ethnicity

Race	Days in care	Moves	Baltimore City	Maryland
AI or AN	0	0		
Asian	0	0		9.33
Black or AA	50,379	346	6.87	7.85
Hispanic	4,236	38	8.97	9.01
NH or PI	0	0		.00
White	7,889	41	5.20	7.99
Two or More	3,031	23	7.59	7.14
Unable to det.	102	6	58.82	9.09
Total	65,637	454	6.92	7.98

Placement rate = # of moves / # of days in care * 1,000

Placement moves per 1,000 days in care, by age at entry

Age	Days in care	Moves	Baltimore City	Maryland
< 1	18,014	85	4.72	5.53
1 - 4	14,846	104	7.01	7.42
5 - 10	11,943	67	5.61	7.65
11 - 13	9,257	75	8.10	9.15
14 - 17	11,577	123	10.62	10.45
Total	65,637	454	6.92	7.98

Placement rate = # of moves / # of days in care * 1,000